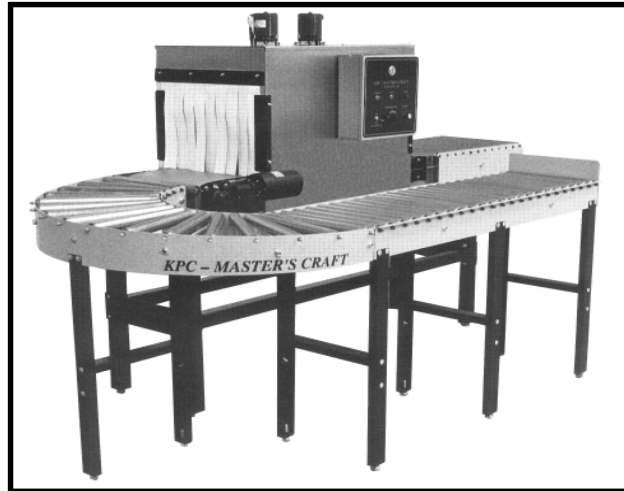


Sustain-A-Wrap® Sustainable Packaging™ Shrink Wrap System

Reusable

Recyclable

Reduces packaging



*Pictured with optional SpaceSaver® 180 degree conveyor, and 4 ft straight conveyor

KPC MASTER'S CRAFT INTERNATIONAL INC

www.kpcmci.com

Phone:

800-594-2205

Or:

330-832-2232

Fax:

877-832-2622

Or:

330-832-2272

Email:

info@kpcmci.com

The CoreWrap® Sustain-A-Wrap® system is primarily designed for shrink wrapping large, heavy, industrial items in thick gauge polyethylene film, but is also well suited for thin gauge oriented films, and retail packages.

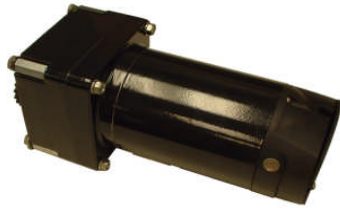
The typical package consists of a poly sleeve or bag, a corrugated pad, and a shipping box. The entire package can contain post consumer waste and is recyclable or reusable. Sustain-A-Wrap® eliminates the need for void fill and may incorporate other features such as tamper evident closures.

The tunnel is primary stainless steel construction and is designed to continuously operate at 550°. The conveyor system will easily accommodate up to 60 lbs/ft.



Green solutions tailored to fit your shrink packaging needs™

Simple Addition



Your Product



Our CoreWrap® Process



The assurance that your product arrives without damage,
looking professional, and costing you very little.



We think outside the box to protect what's inside your box®

